



PANEL SIZING CENTER

ATLAS 80/100





NIMAC GROUP

- 1977 **NIKOLAIDIS MACHINES.** Company Establishment by Anestis Nikolaidis and specialization in beam saws production.
- 2000 Principle of extroversion: continuous presence in the largest exhibitions abroad.
- 2008 New privately owned state-of-the-art factory 4000m² in Kavalari, Thessaloniki.
- 2011 **NIMAC GROUP.** Registration of an international trademark. Production process modernization with strict quality standards. ISO 9001 certification. Recognition in international markets. Production of branded carpentry machinery made in Hellas.
- 2016 **NIMAC CNC Laser.** Cutting and engraving machines manufacturing
- 2017 **NIMAC Robotics.** Department of Robotics and Automation Development.



1977

ENGLAND



GERMANY



PERU





2018 More than **90% of the production** goes to exports in countries of five continents

2019 **Ligna**. Germany. Participation for the fifth time in a row in the Largest Industry Exhibition. Extended recognition in the countries of northern Europe.

2020 **EtherCat Technology**. Establishing top technology in electrical and electronic parts for all machines.

2021 **New investment**. Purchase of a new CNC machine for refinement of all the manufactured parts.

2022 **Net metering**. Green energy. Photovoltaic park installation in order to achieve the factory's energy autonomy.



IRAN

TURKEY

ATLAS

8 0 / 1 0 0

New generation's beam saws by **NIMAC GROUP**

The most competitive European beam saw in the category of cutting up to 5 panels in height at a time - 80-105mm blade projection

- Designed according to the top standards
- Heavy-duty construction without restrictions
- Applied solutions that maximize cutting quality
- High quality components
- Ether Cat technology
- Silent movement of the saw carriage
- Possibility of pre-arrangement of the lifting table
- Grooving
- Cut out

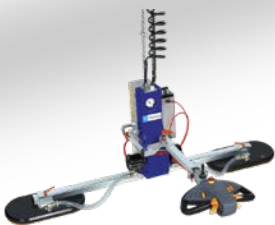


Blade projection	80/105mm
Cutting length	3200mm, 3800mm, 4400mm
Saw carriage speed	5-130m/min
Main motor	10-15-20Hp

Additional equipment:



Powerful pusher for panel movement
Gripper's projection 100mm
Rack-pinion pusher travel system
Sliding on high quality round linear guides
Max accuracy up on double measuring system:
thanks to magnetic tape and servo.



Panel storage system with vacuum-automated magazine for the optimized management of panels.



Front side loading platform



ATLAS

1 0 0 T

Industrial beam saw with automatic back loading platform

Maximize the
quantity of the
cutting panels by
one operator



Double-piston grippers with removable down finger which ensure perfect transport of the selected panels from the stack without damage.



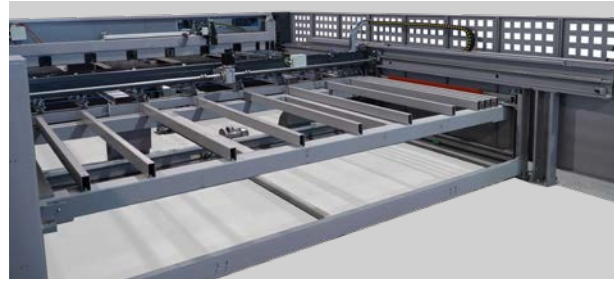
Blade projection	80/105mm
Cutting length	3200mm, 3800mm, 4400mm
Saw carriage speed	5-130m/min
Main motor	10-15-20Hp

Additional equipment:

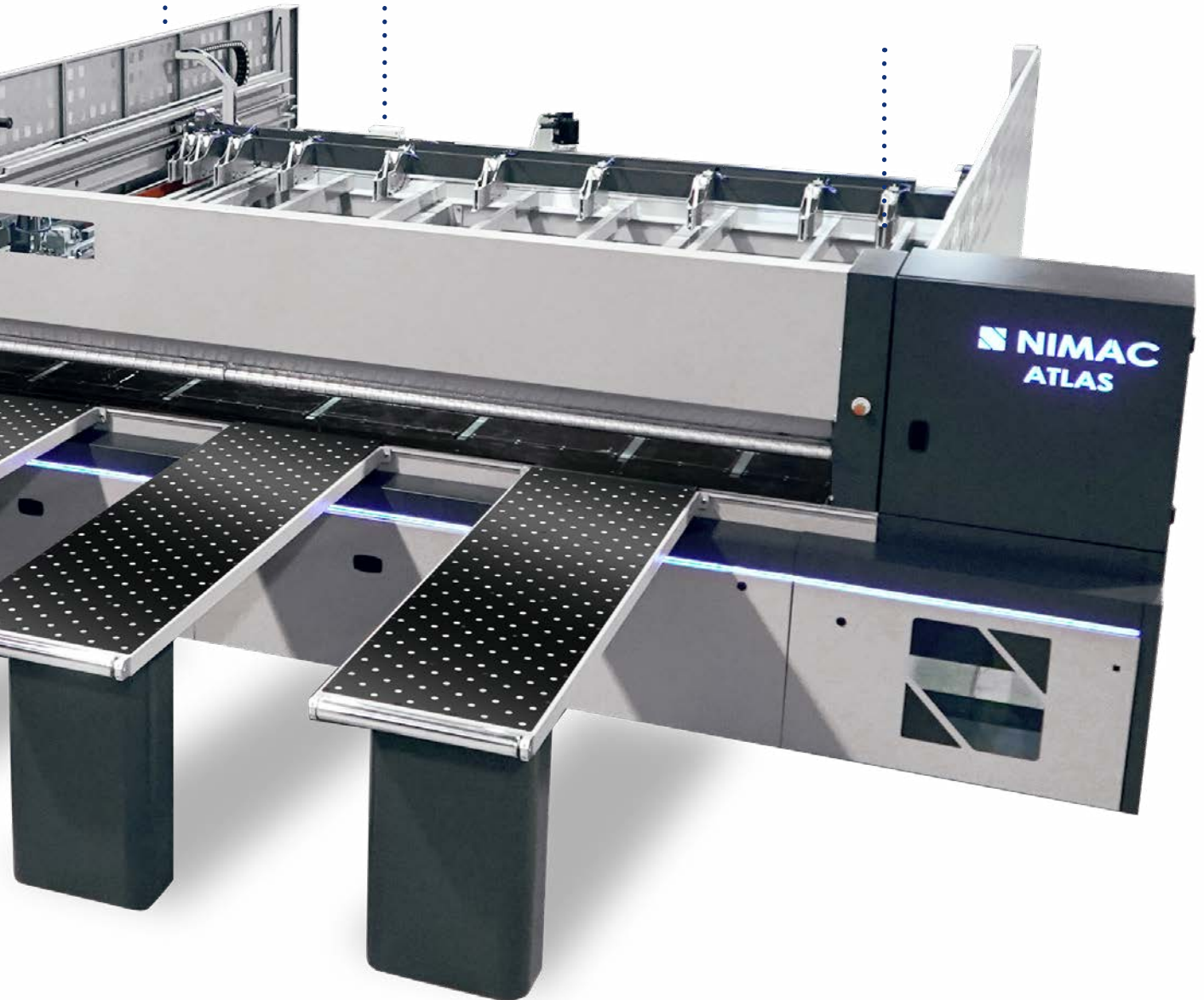


ALIGNERS

Two aligning devices providing perfect panel's parallelism.



Heavy Duty lifting table platform: In standalone frame to avoid vibrations on machine's stability. Moving on 4 large trapezoidal screws. Maximum lifting capacity 600mm.



Side loading platform

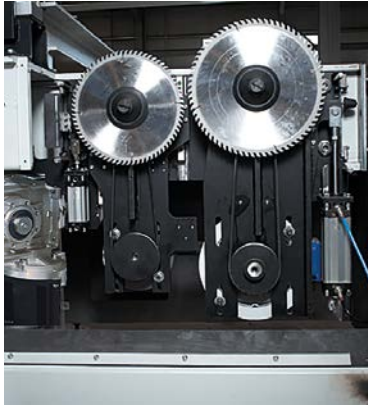


Automated magazine – panel storage system

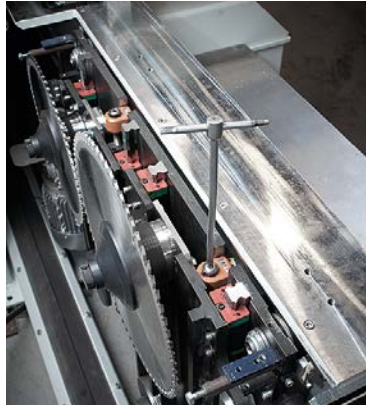


High expectations based on highest quality components

- Ether cat technology
high axes speed
high-speed information's transmission
minimize of losing time
less problems on electric cabinet
robotic cables
servo drive on every axe.
- Controller tpa-3d visualization.
- UPS. PC protection from electricity effects.
- Led operation-color visualization
according the machine's condition.
Mounted on machine's frame.
- Robust construction and hi quality linear shafts
provide stability and accuracy on cutting line.
- Modern pusher controller by ac/servo drive.
Transmission on rack-pinion and sliding on
round linear guides. Max accuracy thanks to
double measuring system: servo motor-magnetic
tape. Pusher's backward speed 50m/min.
- Supporting aluminium bars with rubber rollers
for smooth panel sliding without damages.
- Pressure volume according to panel's material.
- Efficient aspiration tubes on 4 points
- Spraying system for acrylic panels (optional)
- Electronic rotation volume by inverter (optional)
- Blade projection by servo motor (optional)



Sliding on round linear shafts with rack-pinion transmission



Depth grooving regulation by Sikos. Scoring regulation(left-right) from outside kit. By Sikos (optional electronic regulation with servo by pc)



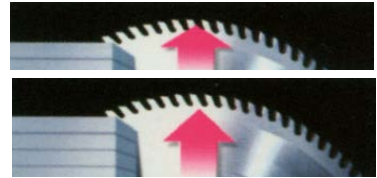
Practical and reliable blade change system (easy change) by using only 1 key



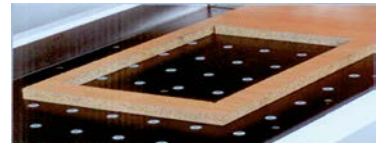
Side aligner 50-1100mm



Grooving system on automatic sequence



Automatic blade projection (2 pos) according panel's thickness



Cut- out



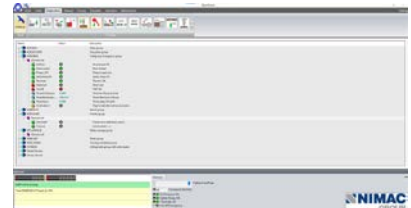
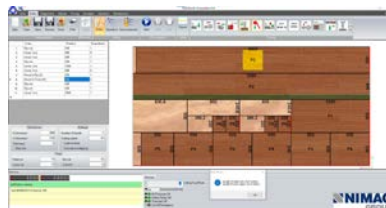
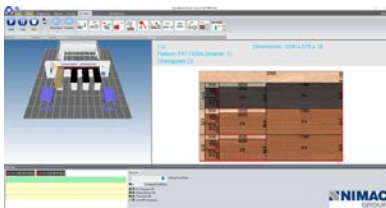


Easy use by powerful software



- Windows 10 and 3d visual program on real time
- OPTICUT top optimizing program
- High analysis monitor for easy use

Smart cut: bigger strips cutting capacity thanks to smart software-production increase



- Easy use software with advanced operations
- Graphical simulator easy programming even on complicated cutting maps
- 3D visualization on real time that shows to used the panel.

- Production report about cutting measures, PVC edge banding and working time
- OPTICUT LITE. powerful optimization provide higher production on min time.

- Error checking menu provide full information about the machine's condition. And ensures the fastest problem's solution
- Connection with external furniture production software and optimizer software's with cost analysis and storage control

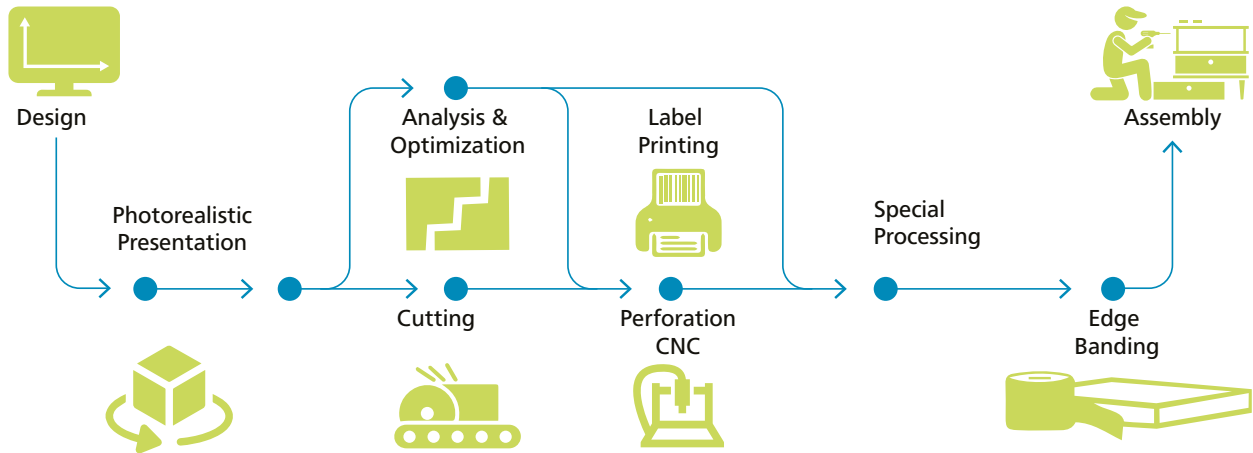


HEXAGON
MANUFACTURING INTELLIGENCE

CABINET VISION
ALPHACAM

COMPLETE SOFTWARE SOLUTIONS

From design to final wood working operation on min time



Design

Full parametrical design.
Powerful box processor
and large library

Rendering

Impressive
photorealistic
presentations

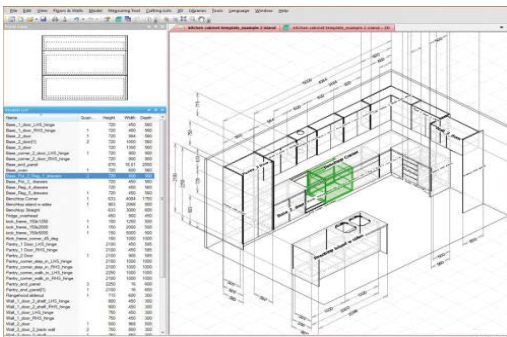
Analysis & Optimization

Large number of automatic
reports including list of materials,
invoices, orders, lists and nesting

Production

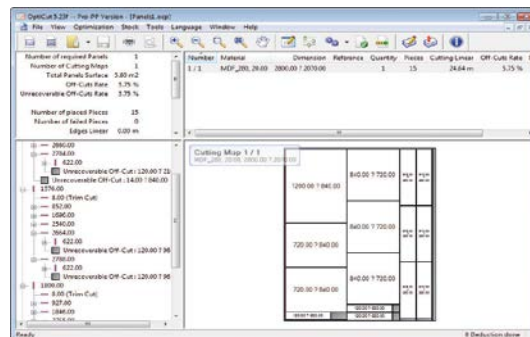
Post processor
for automatic
execution on beam
saws Nimac and
to any cnc router
brand

optional software



FURNITURE DESIGN SOFTWARE

Interactive design and construction software
cabinets, based on a strong methodological idea.
Automatic management of all details
assembly and construction.
Accurate cutting lists. Export of executions
file (post processor) for CNC machines.



OPTICUT PRO PP: CUTTING OPTIMIZATION SOFTWARE, CUTTING / PVC COSTING AND WAREHOUSE

Based on a powerful algorithm that calculates different sheets,
materials and cutting methods. It has water calculation, PVC,
leaf spinning, parametric labels and warehouse management.
Impressive performance: Sorts cutting lists to the most
efficient layouts in seconds, saving time and money.

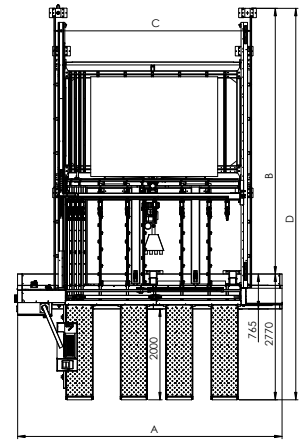
ATLAS 80-100 / ATLAS 100T

TECHNICAL DATA

Cutting length	3200mm	3800mm	4400mm
Pusher's stroke	3200mm	3800mm	4400mm
Blade projection	80-105mm		
Main saw diameter	320-355mm		
Scoring saw diameter	160mm		
Main motor power	10Hp (προαιρετικά 15Hp ή 20Hp)		
Scoring saw power	2Hp	2Hp	2Hp
Saw carriage speed	0-130m/min		
Pusher's travel speed	0-50m/min		
Automatic side aligner	50-1100mm		
Automatic blade projection (2 pos) according panel's thickness			
Grippers quantity (standard)	5	7	9
Magnetic tape for measuring on pusher stroke			
Pressure beam with grooves provides pusher to arrive up to last small cut			
Easy change blade system			
Scoring saw with the ability to fine-regulation vertically and horizontal			
Top controller from TPA			
New 3D imaging software with built-in optimal cutting program and possibility of automatic panel measurement			
PC with Windows 10 and hard disk SSD			
Optimization software opticut lite (Max. 100 pieces)			
Grooving system			
Cut Out			
Automatic lubrication for linear saw carriage rulleman			
CE safety rules ce.safety fence and protection courtin for user hands			
Teleservice via internet			
Electrical panel With EtherCat technology and UPS for PC protection			

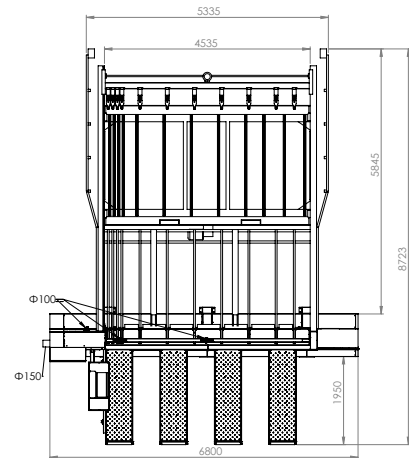
OPTIONAL EQUIPEMENT

Air flotation tables	1300x500mm 2000x600mm
Air flotation on main machine' s frame	
Automatic pressure beam according panel's height	
Main motor 15Hp ή 20Hp.	
Movable second and third table	
Extra grippers	
Aircondition on electrical cabinet	
Barcode printer and software printing module	
Laser line on cutting line	
Full office version PVC computable,warehouse management, cost analysis.	
Unlimited materials and pieces to optimize	
Movable box with Start / Stop button.	
Practical solution for managing Large Panel Length	
Kitchen Cabinet Design Software	



ATLAS 80-100

USEFUL CUTS	A	B	C	D	E
3200x3200	5600	3718	3610	5640/6340	1300/2000
3800x3800	6200	4218	4460	6360/7060	1300/2000
4300x4300	6800	4818	5060	6860/7600	1300/2000

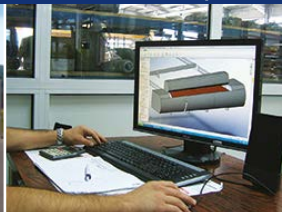


ATLAS 100T

USEFUL CUTS
4400x4400

eyeQcreative

research | technology | precision | quality | service



The technical data can vary according to the requested machine composition. In this catalogue, machines are shown with options. The company reserves the right to modify technical specifications without prior notice; the modifications do not influence the safety foreseen by the CE Norms



NIMAC
GROUP

FACTORY - SHOWROOM

www.nimacgroup.eu

info@nimacgroup.eu

+30 2394053030