



AUTOMATIC PANEL SIZING CENTER

HERMES 70CNC





- 1977 **NIKOLAIDIS MACHINES.** Firm's foundation by Anestis Nikolaidis as a beam saw manufacturing industry.
- 2000 **Exports to the international market.** Constant presence in the largest exhibitions globally.
- 2008 **New state-of-the-art factory** 4.000m² in Kavalari, Thessaloniki.
- 2011 **NIMAC GROUP.** The new international trademark. High end manufacturing certified with **ISO 9001**. Production of wood working machines "made in NIMAC" well established in the international stage.
- 2016 **NIMAC CNC Laser.** Manufacturing of Laser engraving and cutting CNC machines.
- 2017 **NIMAC Robotics.** Developing of the Robotics and Automation department.



1977



ENGLAND



GERMANY



PERU



- 2018 The export rate reaches **90% of the total production** with representation in 5 continents.
- 2019 Participation for the fifth time in a row in **Ligna** (Germany), world's most famous woodworking exhibition. Exports to North Europe.
- 2020 **Introduction of EtheCAT technology.** State-of-the-art technology in all the electronic and control elements of the machines.
- 2021 **New investments** made in CNC machines to enhance and improve the quality of manufacturing.
- 2022 **Net metering** and investment in **Green Energy**. Installation of solar panels to move the factory forward energy autonomy.



HERMES

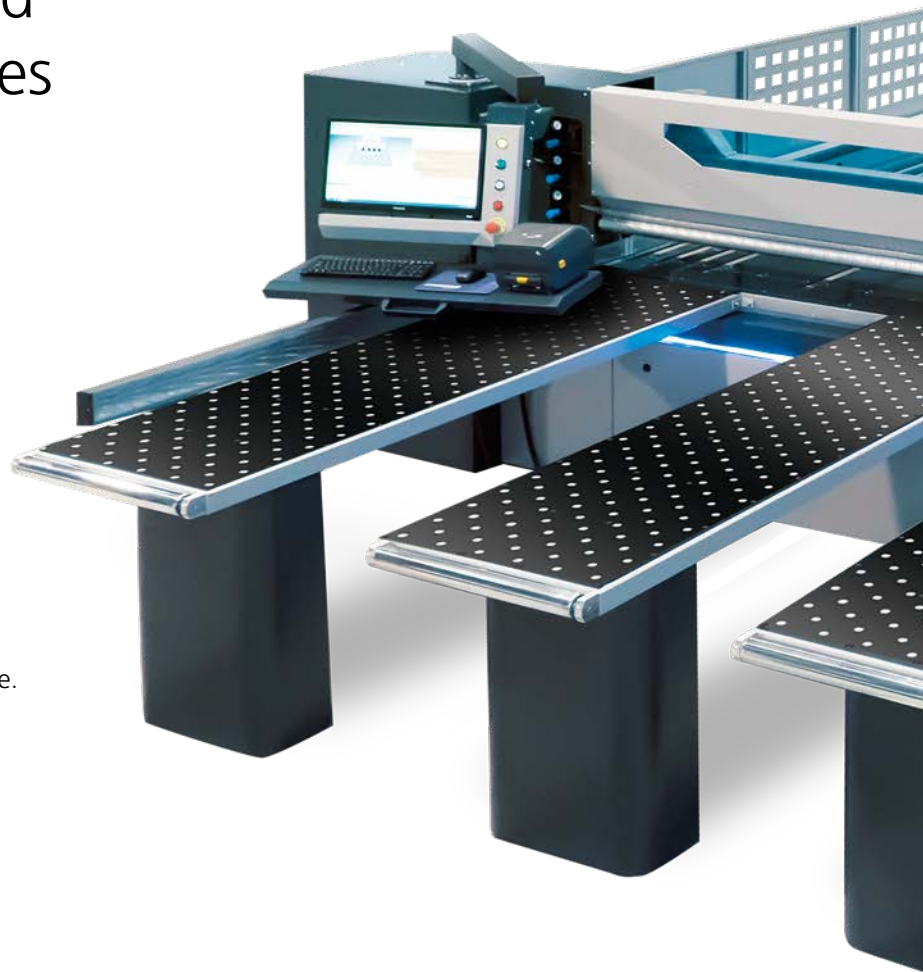
7 0 C N C



Heavy duty (H) beams pusher movement by rack - pinion system (Atlanta).
Smooth movement without vibrations.

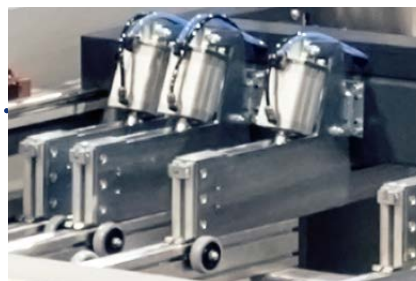
The ideal beam saw for medium sized furniture factories

- Designed according to the top standards.
- Heavy-duty construction without restrictions.
- Applied solutions that maximize cutting quality.
- High quality components.
- Servomotors on saw carriage and pusher. Optimized cutting cycles on the carriage, pressure beam and pusher groups.
- Ether Cat technology.
- Silent movement of the saw carriage.
- Machine preparation for lifting table (optional).
- Blade projection according to panel thickness.
- Grooving (optional).
- Cut out (optional).

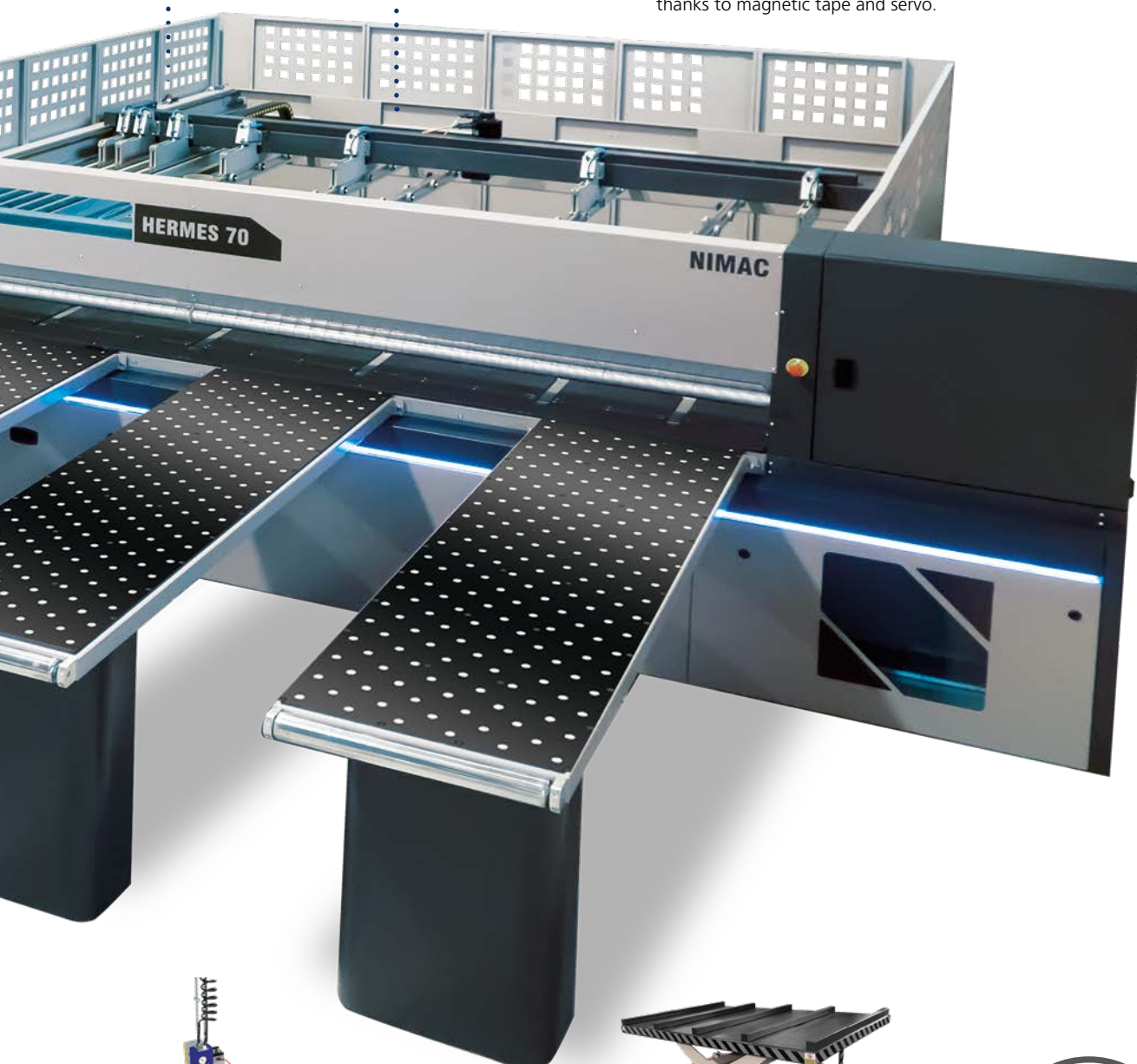


Blade projection	70mm
Cutting length	2900mm, 3200mm, 3800mm
Saw carriage speed	5-100m/min
Main motor	10Hp

Additional equipment:



Powerful pusher for panel movement
 Gripper's projection 100mm
 Rack-pinion pusher travel system
 Sliding on high quality round linear guides
 Max accuracy up on double measuring system:
 thanks to magnetic tape and servo.



Panel storage system with vacuum-
 Automated magazine for the
 optimized management of panels.



Front side loading platform



HERMES

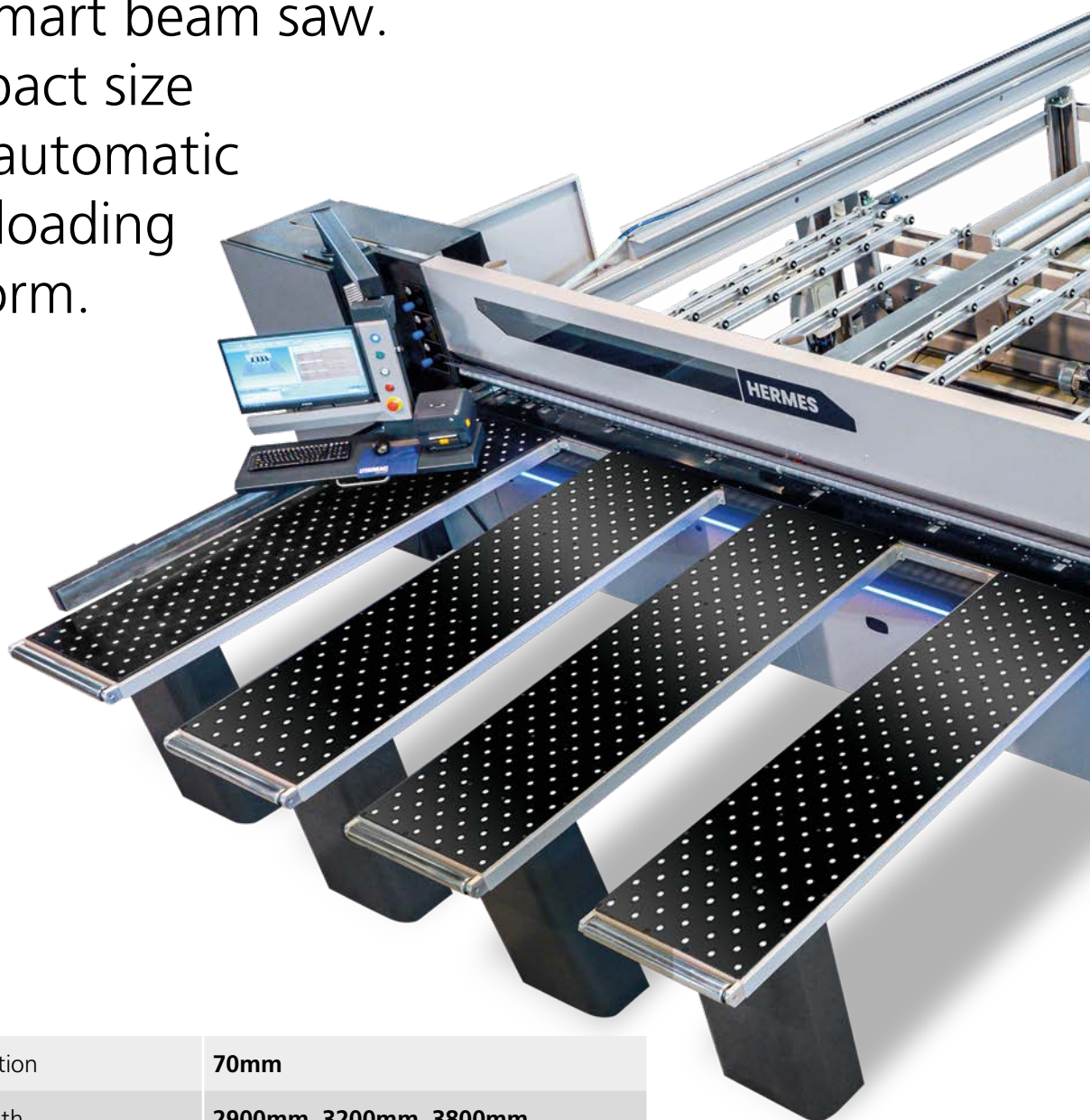
70 T L C N C

The smart beam saw.
Compact size
with automatic
back loading
platform.



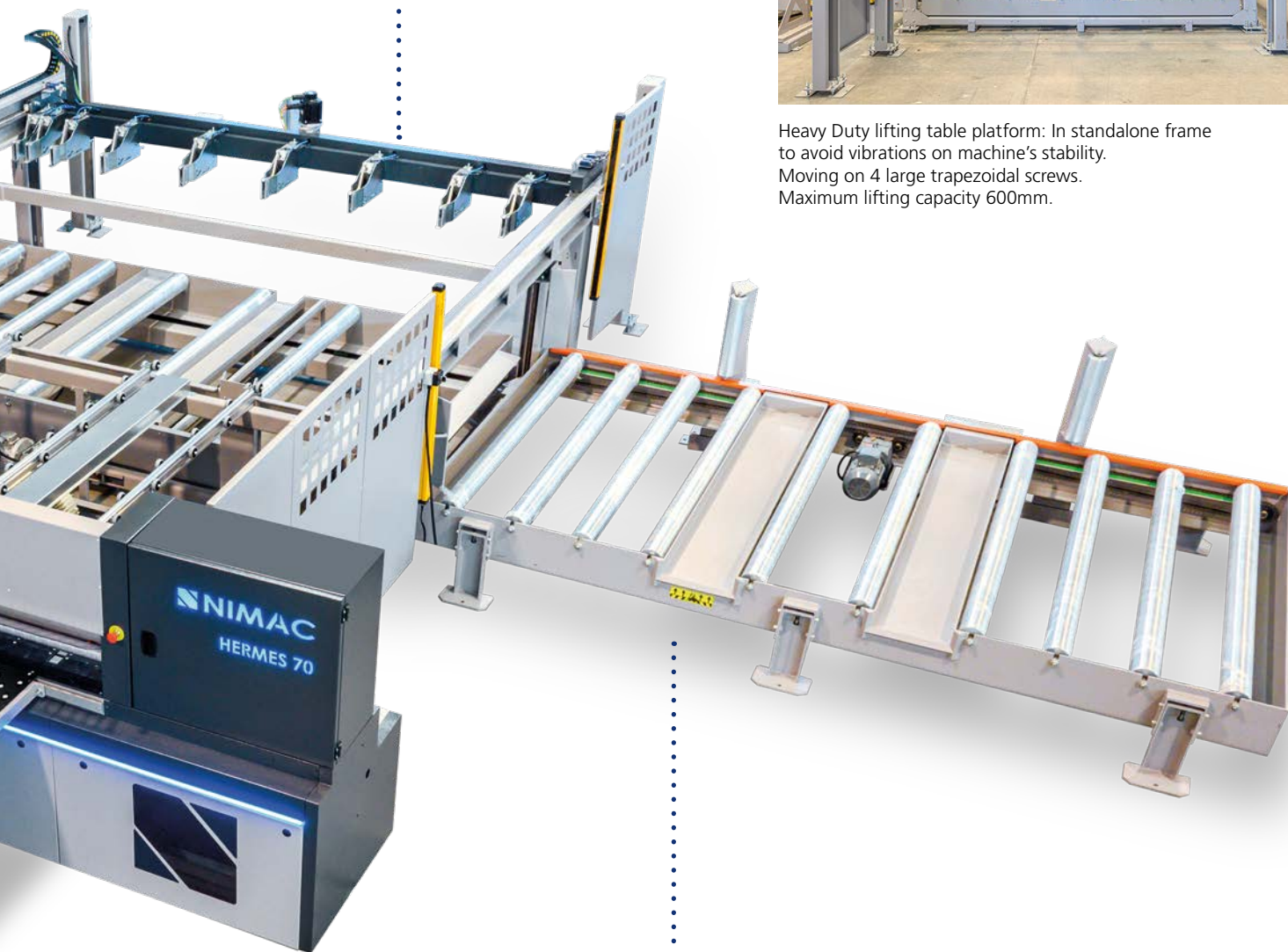
ALIGNERS

Two aligning devices providing perfect panel's parallelism.



Blade projection	70mm
Cutting length	2900mm, 3200mm, 3800mm
Saw carriage speed	5-100m/min
Main motor	10Hp

Additional equipment:



Heavy Duty lifting table platform: In standalone frame to avoid vibrations on machine's stability.
Moving on 4 large trapezoidal screws.
Maximum lifting capacity 600mm.



Automated magazine – panel storage system

Side loading platform

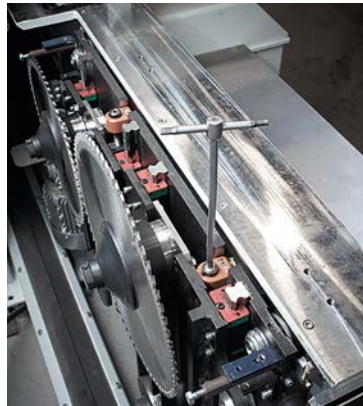


High expectations based on top quality components

- EtherCat technology: The leading industrial protocol for real time communication of all axes, minimization of idle times and maximum accuracy. Reduced wiring, easy maintenance and zero problems in electrical parts.
- Robotic cables. Servo drives on saw carriage and pusher axis.
- Powerful controller TPA including the most advanced software with 3D real time graphic simulation with messages for the operator.
- Cutting Optimizer software.
- UPS for PC protection.
- Silent Motion. Unique technology for saw carriage motion with industrial belt. No vibrations – fast movement, perfect cutting quality. Maintenance-free system. Servomotor for saw carriage movement (speed up to 100 mt/min).
- LED lights: operation-color visualization according the machine's condition. Mounted on machine's frame.
- Robust construction and hi-quality linear shafts provide stability and accuracy on cutting line.
- Modern pusher controlled by servo motor. Transmission on rack-pinion and sliding on round linear guide. Maximum accuracy thanks to double measuring system: servo motor and magnetic encoder. Pusher's backward speed 50m/min.
- Supporting aluminium bars with rubber rollers for smooth panel sliding without damages.
- Pressure beam operation according to panel's thickness.
- Efficient aspiration tubes on 4 points.
- Spraying system for acrylic panels (optional).
- Saw-blade rpm control by inverter (optional).
- Blade projection by servo motor (optional).



High stability linear guides in all axes.



Depth grooving regulation by Sikos. Scoring regulation(left-right) from outside kit. By Sikos (optional electronic regulation with servo by PC).



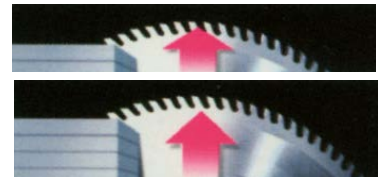
Practical and reliable blade change system (easy change) by using only 1 key.



Side aligner 50-1100mm.



Grooving system on automatic sequence.



Automatic blade projection (2 pos) according panel's thickness



Cut-out.



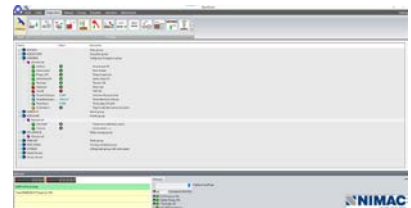
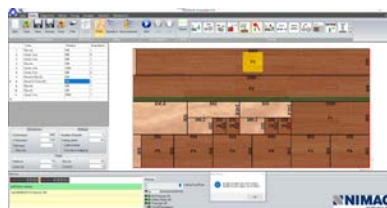
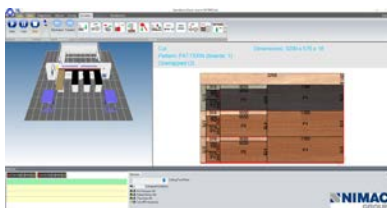


Easy use by powerful software



- Windows 10 and 3d visual program on real time.
- OPTICUT top optimizing program.
- High analysis monitor for easy use.

Smart cut: bigger strips cutting capacity thanks to smart software-production increase.



- Easy use software with advanced operations
- Graphical simulator easy programming even on complicated cutting maps
- 3D visualization on real time that shows to used the panel.

- Production report about cutting measures, PVC edge banding and working time
- OPTICUT LITE. powerful optimization provide higher production on min time.

- Error checking menu provide full information about the machine's condition. And ensures the fastest problem's solution
- Connection with external furniture production software and optimizer software's with cost analysis and storage control.

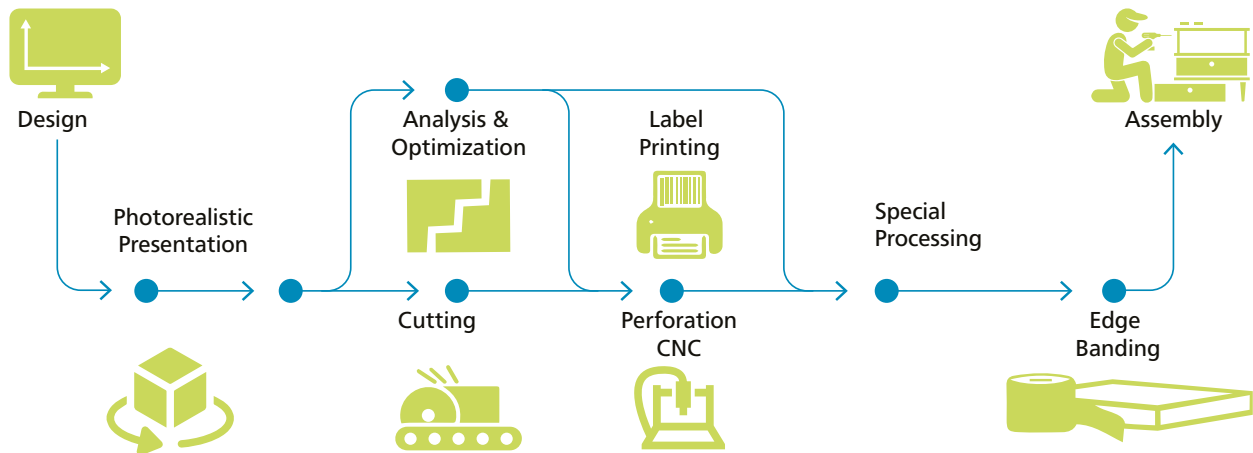


HEXAGON
MANUFACTURING INTELLIGENCE

CABINET VISION
ALPHACAM

COMPLETE SOFTWARE SOLUTIONS

From design to final wood working operation on min time



Design

Full parametrical design.
Powerful box processor
and large library.

Rendering

Impressive
photorealistic
presentations.

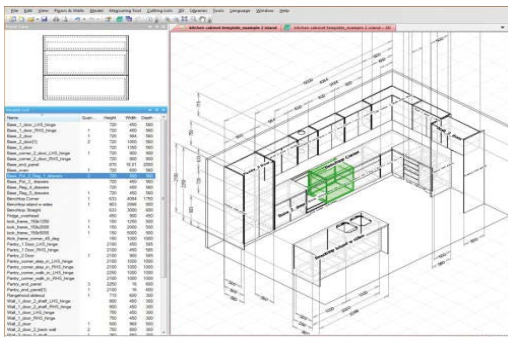
Analysis & Optimization

Large number of automatic
reports including list of materials,
invoices, orders, lists and nesting.

Production

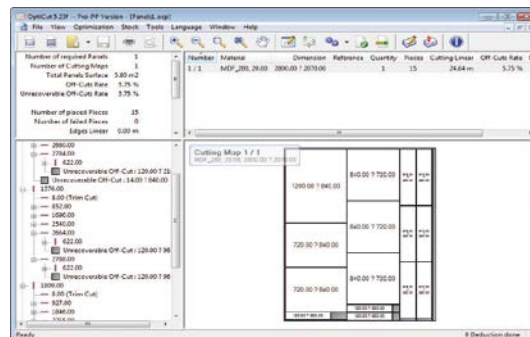
Post processor
for automatic
execution on beam
saws Nimac and
to any cnc router
brand.

optional software



FURNITURE DESIGN SOFTWARE

Interactive design and construction software
cabinets, based on a strong methodological idea.
Automatic management of all details
assembly and construction.
Accurate cutting lists. Export of executions
file (post processor) for CNC machines.



OPTICUT PRO PP: CUTTING OPTIMIZATION SOFTWARE, CUTTING / PVC COSTING AND WAREHOUSE

Based on a powerful algorithm that calculates different sheets,
materials and cutting methods. It has water calculation, PVC,
leaf spinning, parametric labels and warehouse management.
Impressive performance: Sorts cutting lists to the most
efficient layouts in seconds, saving time and money.

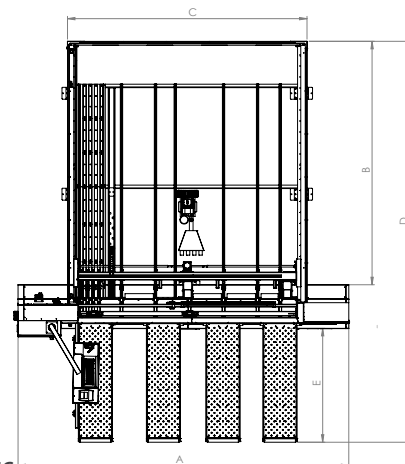
HERMES 70 CNC/HERMES 70TL CNC

TECHNICAL DATA

Cutting length	2900mm	3200mm	3800mm
Pusher's stroke	2900mm	3200mm	3800mm
Blade projection	70/75mm		
Main saw diameter	300-320mm		
Scoring saw diameter	160mm		
Main motor power	10Hp		
Scoring saw power	2Hp		
Saw carriage speed	5-100m/min		
Pusher's travel speed	0-50m/min		
Automatic side aligner	50-1100mm		
Grippers quantity (standard)	5	5	7
Magnetic tape for measuring on pusher stroke			
Pressure beam with grooves provides pusher to arrive up to last small cut			
Easy change blade system			
Scoring saw with the ability to fine-regulation vertically and horizontal			
Top controller from TPA			
New 3D imaging software with built-in optimal cutting program and possibility of automatic panel measurement			
PC with Windows 10 and hard disk SSD			
Optimization software opticut lite (Max. 100 pieces)			
Grooving system			
CE safety rules ce.safety fence and protection courtin for user hands			
Teleservice via internet			
Electrical panel With EtherCat technology and UPS for PC protection			

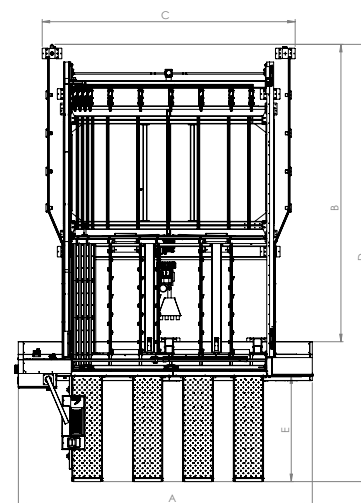
ΕΠΙΠΛΕΟΝ ΕΞΟΠΛΙΣΜΟΣ

Air flotation tables	1300x600mm
	2000x600mm
Air flotation on main machine' s frame	
Grooving system	
Automatic lubrication for linear saw carriage rulleman	
Cut Out	
Automatic pressure beam according panel's height	
Post Forming	
Movable second and third table	
Extra grippers	
Aircondition on electrical cabinet	
Barcode printer and software printing module	
Laser line on cutting line	
Full office version PVC computable,warehouse management, cost analysis.	
Unlimited materials and pieces to optimize	
Movable box with Start / Stop button.	
Practical solution for managing Large Panel Length	
Kitchen Cabinet Design Software	



HERMES 70 CNC

USEFUL CUTS	A	B	C	D	E
2900 x 2900	4935	3395	3325	6170/5470	2000/1300
3800 x 3800	5835	4295	4225	7070/6370	2000/1300



HERMES 70TL CNC

USEFUL CUTS	A	B	C	D	E
2900 x 2900	4935	5000	4120	7775/7075	2000/1300
3800 x 3800	5835	5900	5020	8675/7975	2000/1300

eyeQ creative

research | technology | precision | quality | service



The technical data can vary according to the requested machine composition. In this catalogue, machines are shown with options. The company reserves the right to modify technical specifications without prior notice; the modifications do not influence the safety foreseen by the CE Norms



NIMAC
GROUP

FACTORY - SHOWROOM

www.nimacgroup.eu

info@nimacgroup.eu

+30 2394053030